



## Seaweed Cowl

by Fiber Fiend

Difficulty: Beginner

This cozy cowl works up really quickly in super bulky yarn at 3 stitches per inch. It's knit in the round and is fully reversible for a different look on either side (in a non-bouclé yarn).

Trust me that you will love how it looks in a plainer yarn as well as in Noro Silk Mountain, or wait until I knit one up after the holidays! The size of this cowl can be easily modified by adding or subtracting a multiple of 6 stitches.

### FINISHED MEASUREMENTS

Circumference: 20 inches / 51 cm, unstretched

Height: 6 inches / 15 cm

### MATERIALS

50g / 55yd Super Bulky yarn

Shown in Noro Silk Mountain (65% Wool, 25% Silk, 10% Kid Mohair; 55yd per 50g skein);

color 8

1 16-inch US #10/6mm circular needle

Stitch Marker

Tapestry needle

### GAUGE

12 sts / 17 rows = 4 inches in seaweed stitch (row gauge is not important)

### ABBREVIATIONS

P – purl

K – knit

Rep – repeat

Rnd – round

St – stitch (Sts – stitches)

### DIRECTIONS

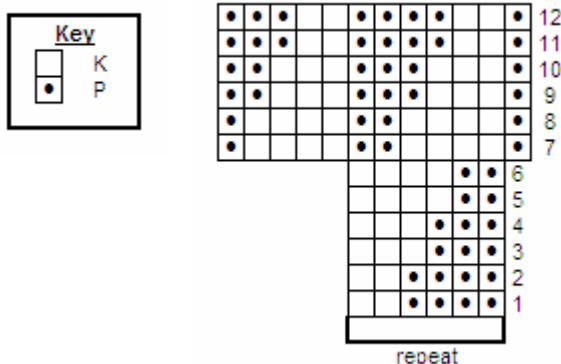
Cast on 60 sts. Place marker and join, being careful not to twist. Work rounds 1-12 of the seaweed stitch pattern written directions or chart below until piece measures 6", until desired length, or until you run out of yarn (or almost run out of yarn). As a rule of thumb, it takes 3 times the circumference of your piece in yarn to work one round of knitting, so when you have 60 inches / 153 cm of yarn left, or less than 120 inches / 306 cm of yarn left, you should bind off if you don't want to start another skein of yarn. Bind off in pattern.

### Seaweed Stitch Pattern:

Rnd 1: \*P4 k2, rep from \*.  
Rnd 2: Same as rnd 1.  
Rnd 3: \*P3 k3, rep from \*.  
Rnd 4: Same as rnd 3.  
Rnd 5: \*P2 k4, rep from \*.  
Rnd 6: Same as rnd 5.  
Rnd 7: P1, \*k4 p2, rep from \*, end k4 p1.  
Rnd 8: Same as rnd 7.  
Rnd 9: P1, \*k3 p3, rep from \*, end k3 p2.  
Rnd 10: Same as rnd 9.  
Rnd 11: P1, \*k2 p4, rep from \*, end k2 p3.  
Rnd 12: Same as rnd 11.



### Seaweed Stitch Pattern Chart:



### FINISHING

Weave in ends.

### ABOUT THE DESIGNER

Fiber Fiend lives in the San Francisco Bay Area with her husband and two young energetic dogs. Half-time engineer, half-time knitwear designer and fiber/yarn entrepreneur, Fiber Fiend, chronicles her progress in dyeing, spinning, knitting, and the social politics of pack life at <http://fiberfiend.com/blog>. Join the Ravelry Fiber Fiends group (<http://www.ravelry.com/groups/fiber-fiends>) for the latest updates, to share your projects, and to chat! If you have any problems with or questions about the pattern, email [thefiend@fiberfiend.com](mailto:thefiend@fiberfiend.com).

Pattern & Images Copyright 2008 Fiber Fiend

This pattern is for personal, non-commercial use ONLY. All other uses require the permission of the author. Reproduction or distribution of this pattern without the express permission of the author is strictly prohibited. This includes distribution of this work through electronic or print media. Printed copies of this pattern may be made for personal use, and may not be resold.